

# Smoketree Ranch 12 6R, Palm Springs



- 2,747 sq ft of Living Space
- 19,166 sq ft Lot, Fee Land
- Built in 1941
- 3 Bedrooms, 4 Baths
- Double Garage
- 53 Bungalows for Your Guests
- HOA: \$833
- MLS No. 41424513
- Listing No. 145

**\$1,490,000**

One of only 93 private homes in Historic Smoketree Ranch encompassing over 400 pristine acres within this south Palm Springs guard-gated community. This very special family home rests on a large corner lot and enjoys a circular drive entry with dramatic cactus garden, view vistas in every direction and a true old-world charm throughout. Three bedrooms all with baths ensuite, double bathrooms in the master suite, large walk-in closets, a bright and open living room with wood beamed vaulted ceiling, fireplace and a picture perfect window scene, dining room, loads of storage and tons of charm. Owning in Smoketree gives you the opportunity to join the Ranch Club offering an incredible lifestyle with clubhouse, restaurant, swimming pool, tennis club, on-site hotel/bungalows for visiting guests and access to Smoketree Stables. As an owner you also receive 660 shares of Smoketree Ranch stock. This is a rare opportunity to make your desert home where families have gathered for over 100 years!



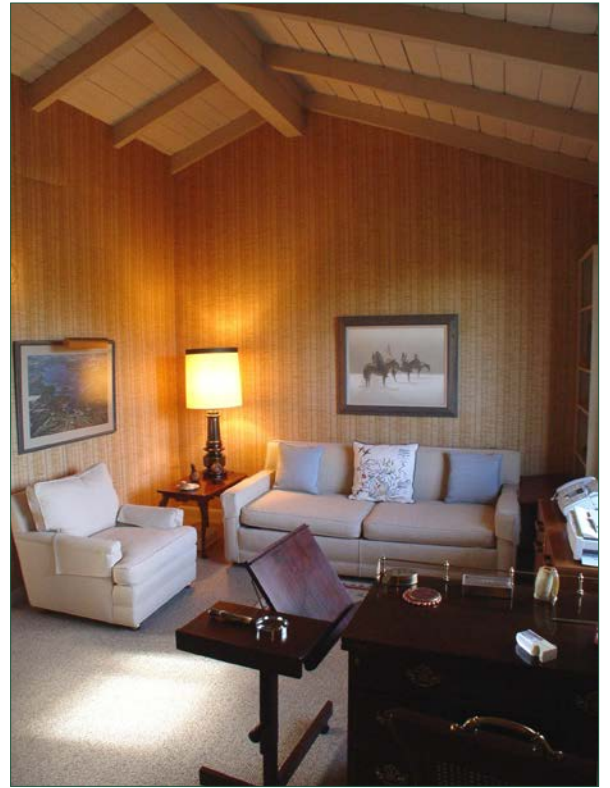
**SCOTT LYLE**  
Scott Lyle Realtors  
License # 00700215



**Direct: 760.327.4312**  
**Office: 760.778.6200**



# Smoketree Ranch 12 6R, Palm Springs



**SCOTT LYLE**  
Scott Lyle Realtors  
License # 00700215



Direct: 760.327.4312  
Office: 760.778.6200

