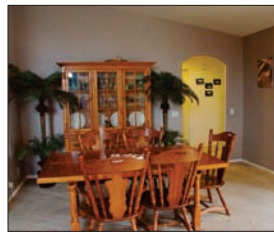


Great Value in Desert Park Estates



2298 N San Clemente Road Palm Springs

- 1,686 Square Feet of Living Space
- 10,019 Square Foot Lot, Fee Land
- Year Built: 2001
- Great Room with Vaulted Ceiling
- 4 Bedrooms, 2 Baths
- Laundry Room
- Pool & Spa
- Double Garage
- RV Parking
- Listing No. 130



MLS No. 41388337

Very nice Spanish style home on a quiet street. Huge vaulted great room plan has living area with fireplace, large dining area and an open kitchen with island and eating bar designed for open family living. Four bedrooms and two baths. Covered patio to pool yard with custom pool and spa. There is a separate yard off the living room and on the north side of the house concrete RV parking with a wrought iron gate. With just a small amount of tender loving care this will prove to be one of the most incredible values available in Palm Springs. Built in 2001, this is a great starter home. It would also work very well as a rental income investment.

\$222,000



SCOTT LYLE
Scott Lyle Realtors



Direct: 760.327.4312
Office: 760.778.6200

